

SCPV – TEMPEST-32ACPF/H

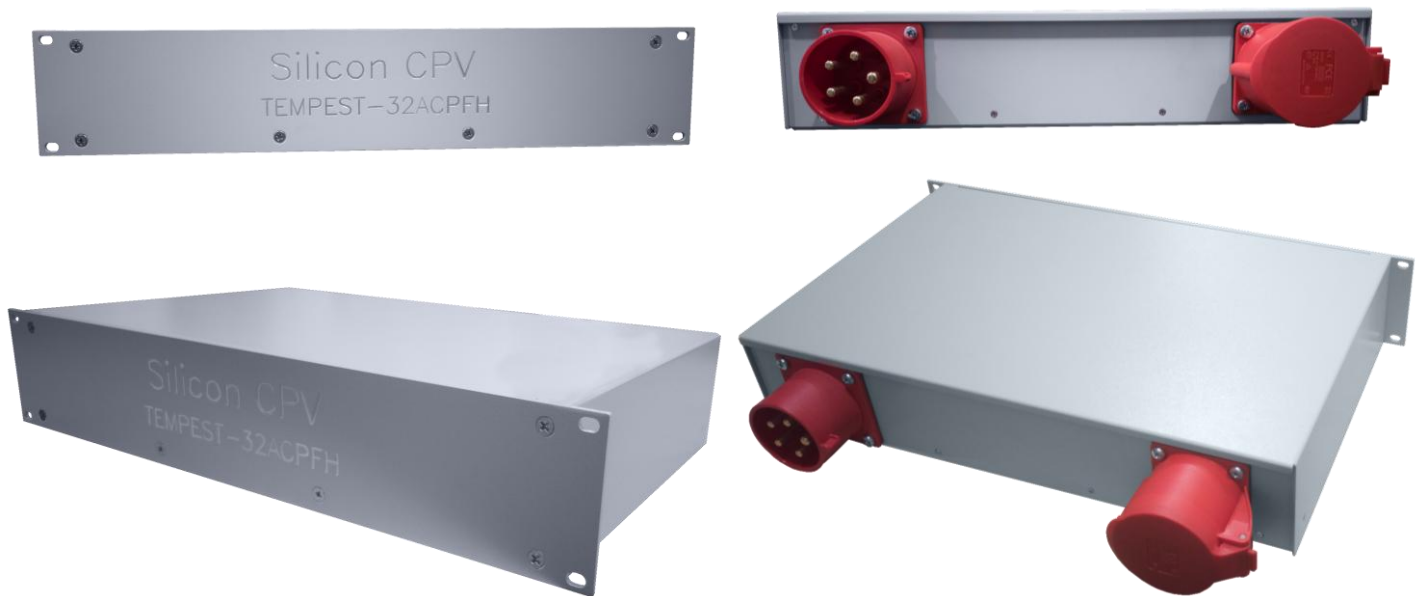
19" - 2U Rack Mount Filter

Silicon CPV's 19" Rack Mount TEMPEST pluggable filter, has been designed for use within stringent TEMPEST environments and applications, where protection compliant to SDIP-29 and equipment hardening to SDIP-27 is required.

The product uses ultra-reliable self-healing capacitors, in all units to deliver optimum performance across the full frequency range and under all loading conditions.

The SCPV filter has been designed for use within unprotected power environments to ensure deployment and electrical installation is as quick and simple as possible.

The Silicon CPV filter come in as a 4-wire 3 phase with current ratings of up to 32A per phase with HEMP protection as an option.



Description

- 19" – 2U Rack Mountable Filter
- TEMPEST EMI SP & N filter providing performance to SDIP-27 B/C
- Insertion loss of 60dB from 100kHz to 1GHz
- **Input panel mount IEC 60939-2-2005/AMD1:2023 3P+N+E 6h 32A (4P5W) Plug**
- **Output panel mount IEC 60939-2-2005/AMD1:2023 3P+N+E 6h 32A (4P5W) Socket**
- Designed to IT equipment safety standard IEC 62368-1:2023
- Fully 360° screened input cable to maintain red/black separation to filter
- Low Smoke Zero Halogen (LSZH) rated cabling for use in sensitive areas
- Self-healing metallised plastic film capacitors
- High common & differential mode insertion loss
- Improved low frequency performance
- Powder coated aluminium enclosure
- 4-wire 3 phase with current ratings of up to 32A per phase
- UKCA - CE compliant – 3 phase nominal input voltage 440VAC
- 5-year warranty
- Filters comply with basic requirements of the EMC directive 2014/30/EU
- Optional HEMP Protection E1/ E2 pulses



Ratings and Characteristics

Rated Voltage	440V AC 50/60Hz
Test Voltage (line-earth)	2250V DC
Test Voltage (line-Line)	1250V DC
Rated Current @50°C	32A per phase
Earth Leakage Current @50Hz	< 3.0mA per phase
Max Temp Rise @Full Load	<35°C
Weight Kg (approx.)	8

Storage Temp Range	-25°C to 85°C
Operating Temp Range	-20°C to 50°C
Insertion Loss (50Ω Asymmetric)	60dB, 100KHz - 1GHz
Discharge Time	Less than 1s to below 34V
Enclosure	2U Rack mount
Finish	Powder coated

Silicon CPV filter meet or exceed the performance and safety criteria defined in the following standards:

UL1283

LVD 2014/35/EU

NATO STANAG 1008 Ed.9 shipboard supplies

DEF-STAN 59-411/MIL-STD-461

RoHS (2011/65/EU) & LVD (2014/35/EU)

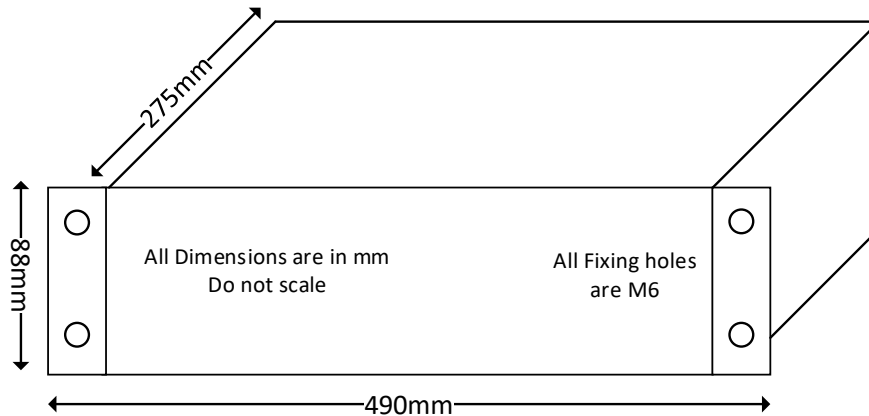
UKCA & CE

Mil-F-15733

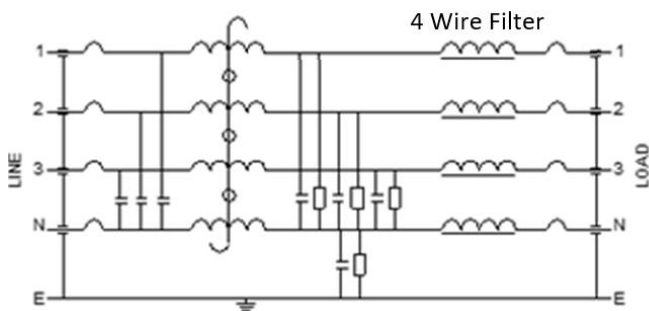
Mil-Std-220C

CISPR17:2011/BS EN 55017:2011

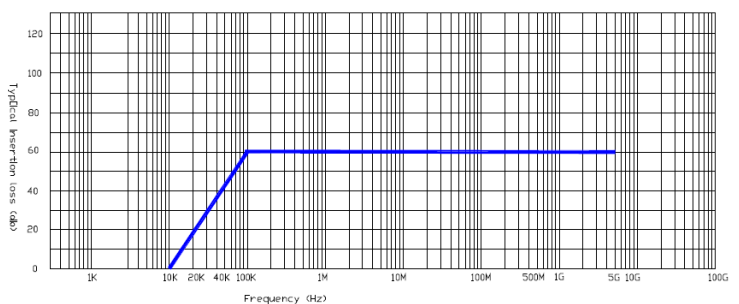
Dimensional Data



Schematic



Performance Characteristics and Insertion Loss Curves



***Schematic for illustration purposes only**

Part No and Ordering Information

Order Part No	Product Description
SCPVTEMPEST32ACPF (without HEMP)	19"-2U Rack Mount 3 phase, 32A Filter, with panel mount IEC 60939-2-2005/AMD1:2023 3P+N+E 6h 32A (4P5W) Plug and socket. Optional HEMP Protection E1/ E2 pulses
SCPVTEMPEST32ACPFH (with HEMP)	